



WELCOME TO

PARITOSH GLOBAL EXIM

EXPORT IMPORT

Beroya, bhatar, purbo barddhaman, west bengal, India, 713128



Paritosh Global Exim is an export-import company specializing in a range of high-quality products, including handmade Madurkhathi items. Madurkhathi products are traditional handicrafts from India, made using natural fibers from the madur plant. These products, such as mats and rugs, are known for their intricate weaving patterns, durability, and eco-friendliness. Paritosh Global Exim ensures that these culturally rich and sustainable items reach global markets, promoting traditional craftsmanship and supporting local artisans.

ABOUT MADURKHATHI



Madurkhathi refers to a traditional form of handwoven mat made from the Madur plant, scientifically known as *Cyperus tegetum*. This craft is predominantly practiced in the Medinipur district of West Bengal, India. The term "Madur" refers to the mat, while "Khathi" refers to the specific weaving style.

Madurkhathi mats are known for their durability, flexibility, and natural cooling properties, making them ideal for use in hot climates. The weaving process involves splitting the Madur stalks into thin strips and then intricately weaving them together, often with colorful threads to create various patterns and designs. These mats are used for sitting, sleeping, and as decorative items in homes. Madurkhathi products are eco-friendly and biodegradable, aligning with sustainable living practices.

SLING BAG

Item Code: PMI-SB-01

Material: Madurkhathi, Cotton & Eva

Weaving Type: Handloom

SIZE: 9" * 3" * 7.5"

Weight: 250 gm



SLING BAG 2

Item Code: PMI-SB-02

Material: Madurkhathi, Cotton & Eva

Weaving Type: Handloom

SIZE: 9*3*7.5 INCH

Weight: 250gm



MASLAND SLING BAG

Item Code: **PMI-SB-03**

Material: **Madurkhathi, Cotton & Eva**

Weaving Type: **Hand Weaving**

SIZE: **9*3*7.5 inch**

Weight: **250 gm**



LADIES BAG

Item Code: **PMI-LB-01**

Material: **Madurkhathi, Cotton & Eva**

Weaving Type: **Handloom**

SIZE: **14*14*4 inch**

Weight: **400 gm**



LADIES BAG (MASLAND)

Item Code: PMI-LB-02

Material: Madurkhathi, Cotton & Eva

Weaving Type: Hand Weaving

SIZE: 14.5*12*4.5 inch

Weight: 400gm



LADIES ROUND BAG

Item Code: PMI-LB-03

Material: Madurkhathi, Cotton & Eva

Weaving Type: Handloom

SIZE: 16*11*4.5 inch

Weight: 300 gm



LADIES SIDE BAG

Item Code: **PMI-LB-04**

Material: **Madurkhathi, Cotton & Eva**

Weaving Type: **Handloom**

SIZE: **14*12*4 inch**

Weight: **350 gm**



LADIES HAND BAG

Item Code: **PMI-LB-05**

Material: **Madurkhathi, Cotton & Eva**

Weaving Type: **Handloom**

SIZE: **11*13*3.5 inch**

Weight: **300 gm**



LADIES SIDE BAG

Item Code: **PMI-LB-04**

Material: **Madurkhathi, Cotton & Eva**

Weaving Type: **Handloom**

SIZE: **14*12*4 inch**

Weight: **350 gm**



LADIES BAG

Item Code: PMI-LB-06

Material: Madurkhathi, Cotton & Eva

Weaving Type: Handloom

SIZE: 14*10.5*3 inch

Weight: 300 gm



COSMETICS BAG

Item Code: PMI-CB-01

Material: Madurkhathi, Cotton & Eva

Weaving Type: Handloom

SIZE: 9*3*5.5 inch

Weight: 200 gm



TOILETARY POUCH

Item Code: PMI-TP-01

Material: Madurkhathi, Cotton & Eva

Weaving Type: Handloom

SIZE: 8*3*2.5 inch

Weight: 100 gm



LAUNDRY BAG

Item Code: **PMI-LB-07**

Material: **Madurkhathi, Cotton & Eva**

Weaving Type: **Handloom**

SIZE: **Dia-9 inch, H- 11 inch**

Weight: **300 gm**



OFFICE BAG

Item Code: **PMI-OB-01**

Material: **Madurkhathi, Cotton & Eva**

Weaving Type: **Handloom**

SIZE: **14*12*3 inch**

Weight: **350 gm**



LAPTOP BAG

Item Code: **PMI-OB-02**

Material: **Madurkhathi, Cotton & Eva**

Weaving Type: **Handloom**

SIZE: **16*11*2 inch**

Weight: **400 gm**



FILE FOLDER

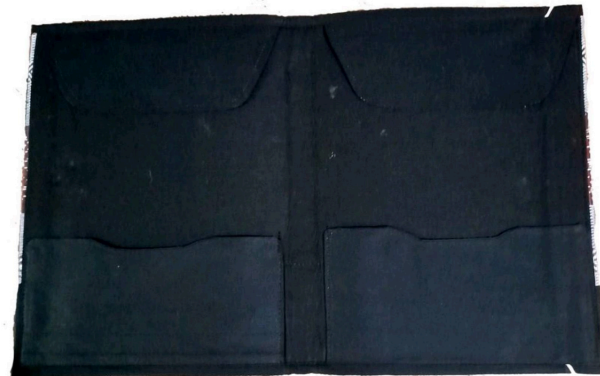
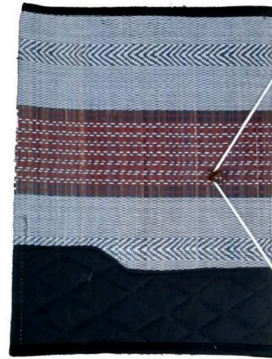
Item Code: PMI-FF-01

Material: Madurkhathi, Cotton & Paper Board

Weaving Type: Handloom

SIZE: 14*10*1 inch

Weight: 300 gm



FILE FOLDER

Item Code: PMI-FF-02

Material: Madurkhathi, Cotton & Paper Board

Weaving Type: Handloom

SIZE: 14*10*1 inch

Weight: 300 gm



FILE FOLDER

Item Code: PMI-FF-03

Material: Madurkhathi, Cotton & Eva

Weaving Type: Handloom

SIZE: 15*10 inch

Weight: 250 gm



ORGANIZER

Item Code: **PMI-OR-01**

Material: **Madurkhathi, Cotton & Paper Board**

Weaving Type: **Handloom**

SIZE: **9*6.2*1.2 inch**

Weight: **650 gm**



LADIES PURSE

Item Code: **PMI-LP-01**

Material: **Madurkhathi, Cotton & Eva**

Weaving Type: **Handloom**

SIZE: **8*4*1 inch**

Weight: **125 gm**



GENTS WALLET

Item Code: PMI-GW-01

Material: Madurkhathi & Cotton

Weaving Type: Hand Weaving

SIZE: Standard

Weight: 100 gm



LADIES PURSE

Item Code: **PMI-LP-02**

Material: **Madurkhathi, Cotton & Eva**

Weaving Type: **Handloom**

SIZE: **8.5*5*1 inch**

Weight: **100 gm**



COIN PURSE

Item Code: **PMI-LP-03**

Material: **Madurkhathi, Cotton, Rexine & Eva**

Weaving Type: **Handloom**

SIZE: **6*4*2 inch**

Weight: **75 gm**



BATUA BAG

Item Code: PMI-BB-01

Material: Madurkhathi, Cotton & Eva

Weaving Type: Handloom

SIZE: 11*6*2.5

Weight: 100 gm



TISSUE PAPER HOLDER

Item Code: **PMI-TPH-01**

Material: **Madurkhathi, Cotton & Paper Board**

Weaving Type: **Handloom**

SIZE: **10*5*3.5 inch**

Weight: **200 gm**



MASK HOLDER

Item Code: PMI-TPH-02

Material: Madurkhathi, Cotton & Paper Board

Weaving Type: Handloom

SIZE: 7.5*4*3 inch

Weight: 150 gm



MULTI-UTILITY BOX SET

Item Code: **PMI-MBS-01**

Material: **Madurkhathi, Cotton & Paper Board**

Weaving Type: **Handloom**

SIZE: **4*4*3/6*4/8*8*5 inch**

Weight: **700 gm**



MULTI-UTILITY BOX SET

Item Code: **PMI-MBS-02**

Material: **Madurkhathi, Cotton & Paper Board**

Weaving Type: **Handloom**

SIZE: **D-9,H-5/D-7.5,H-4/D-5.2,H-3.2 inch**

Weight: **750 gm**



**Box Set
Size:
D-9"/7.5"/5.
2"
H-5"/4"/3.2"**

PEN AND PENCIL POUCH

Item Code: PMI-PP-01

Material: Madurkhathi, Cotton & Eva

Weaving Type: Handloom

SIZE: 9*2 inch

Weight: 50 gm



PEN AND PENCIL POUCH

Item Code: PMI-PP-02

Material: Madurkhathi, Cotton & Eva

Weaving Type: Handloom

SIZE: 9/2 inch

Weight: 50 gm



PEN AND PENCIL STAND

Item Code: PMI-PP-03

Material: Madurkhathi, Cotton & Paper Board

Weaving Type: Handloom

SIZE: 6*4 inch

Weight: 100 gm



WALL CLOCK

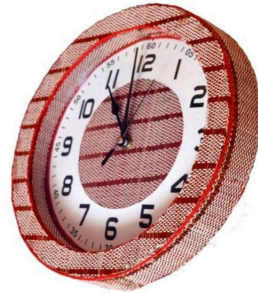
Item Code: PMI-WC-01

Material: Madurkhathi, Cotton & Paper Board

Weaving Type: Handloom

SIZE: Dia-9.5, H-1.5 inch

Weight: 350



WATTER BOTTLE BAG

Item Code: PMI-WB-01

Material: Madurkhathi, Cotton & Jute

Weaving Type: Handloom

SIZE: 12*5*4 inch

Weight: 100 gm



LUNCH BAG

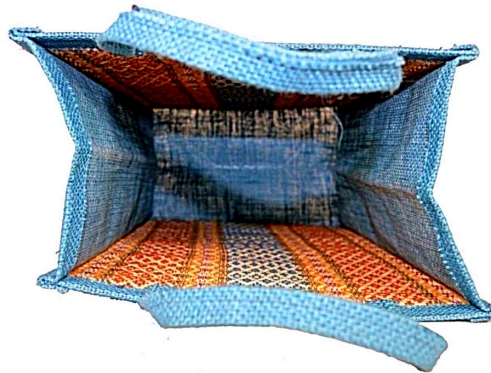
Item Code: **PMI-WB-02**

Material: **Madurkhathi, Cotton & Jute**

Weaving Type: **Handloom**

SIZE: **12*9*5 inch**

Weight: **100 gm**



SHOPPING BAG

Item Code: **PMI-WB-03**

Material: **Madurkhathi, Cotton & Jute**

Weaving Type: **Handloom**

SIZE: **15*14*5 inch**

Weight: **150gm**



MAGAZINE HOLDER

Item Code: **PMI-MH-01**

Material: **Madurkhathi, Cotton & Paper Board**

Weaving Type: **Handloom**

SIZE: **12*8*5.5 inch**

Weight: **200gm**



MADUR TRAY

Item Code: **PMI-MT-01**

Material: **Madurkhathi, Cotton & paper board**

Weaving Type: **Hand Weaving**

SIZE: **10*8.5*2 inch**

Weight: **150gm**



CAP

Item Code: **PMI-WB-03**

Material: **Madurkhathi & Cotton**

Weaving Type: **Handloom**

SIZE: **Standard**

Weight: **100gm**



WALL POCKET

Item Code: **PMI-WP-01**

Material: **Madurkhathi & Cotton**

Weaving Type: **Handloom**

SIZE: **29*9 inch**

Weight: **100gm**



FLOOR MAT

Item Code: PMI-FM-01

Material: Madurkhathi & Cotton

Weaving Type: Handloom

SIZE: 54*80 inch

Weight: 1250gm



FLOOR MAT

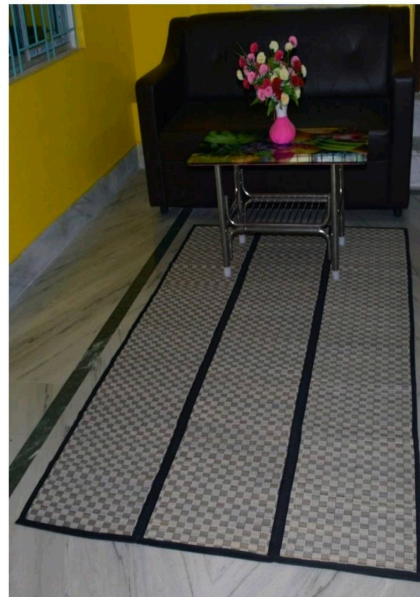
Item Code: PMI-FM-02

Material: Madurkhathi & Cotton

Weaving Type: Handloom

SIZE: 54*80 inch

Weight: 1100gm



FLOOR MAT

Item Code: **PMI-FM-04**

Material: **Madurkhathi & Cotton**

Weaving Type: **Handloom**

SIZE: **36*72 inch**

Weight: **800gm**



FLOOR MAT

Item Code: PMI-FM-05

Material: Madurkhathi & Cotton

Weaving Type: Handloom

SIZE: 36*80 inch

Weight: 800gm



FLOOR MAT

Item Code: **PMI-FM-06**

Material: **Madurkhathi & Cotton**

Weaving Type: **Handloom**

SIZE: **36*72 inch**

Weight: **900gm**



TABLE MAT SET

Item Code: **PMI-TM-01**

Material: **Madurkhathi & Cotton**

Weaving Type: **Handloom**

SIZE: **Mat-12*17 inch, Runner- 52 inch**

Weight: **500gm**



TABLE MAT SET

Item Code: **PMI-TM-02**

Material: **Madurkhathi & Cotton**

Weaving Type: **Handloom**

SIZE: **Mat-12*17 inch, Runner- 60 inch**

Weight: **500gm**



MASLAND TABLE MAT SET

Item Code: PMI-TM-03

Material: Madurkhathi & Cotton

Weaving Type: Hand Weaving

SIZE: Mat-12*17 inch, Runner- 60 inch

Weight: 550gm

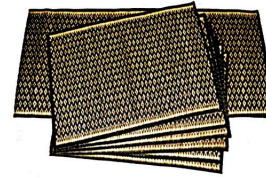


TABLE MAT SET

Item Code: **PMI-TM-04**

Material: **Madurkhathi & Cotton**

Weaving Type: **Handloom**

SIZE: **Mat-12*17 inch, Runner- 52 inch**

Weight: **500gm**



CURTAINS

Item Code: PMI-MC-01

Material: Madurkhathi & Cotton

Weaving Type: Handloom

SIZE: 48/72 inch

Weight: 1200gm



YOGA MAT

Item Code: PMI-YM-01

Material: Madurkhathi & Cotton

Weaving Type: Handloom

SIZE: 24*72 inch

Weight: 600gm



YOGA MAT

Item Code: **PMI-YM-02**

Material: **Madurkhathi & Cotton**

Weaving Type: **Handloom**

SIZE: **24*72 inch**

Weight: **600gm**



Floor Mat With Pad

Item Code: **PMI-YM-03**

Material: **Madurkhathi & Cotton & Sponge**

Weaving Type: **Handloom**

SIZE: **54*72 inch**

Weight: **1200gm**



MASLAND MAT

Item Code: PMI-MM-01

Material: Madurkhathi & Cotton

Weaving Type: Hand Weaving

SIZE: 36*72 inch

Weight: 900gm



MASLAND MAT

Item Code: **PMI-MM-02**

Material: **Madurkhathi & Cotton**

Weaving Type: **Hand Weaving**

SIZE: **36*72 inch**

Weight: **900gm**



THANK YOU



PARITOSH PAIN
CEO AND FOUNDER

Export Import Business



+91 9002121273 | +91 9734516687



paritoshglobal8719@gmail.com
support@paritoshglobalexim.com



www.paritoshglobalexim.com



Beroya, Bhatar, Purba
Bardhaman, West Bengal,
pin 713128, India

